

Editorial procedure

Peer Review Process:

All submitted manuscripts are initially read for appropriateness by the Editor or handling editors. As peer review requires a substantial investment of time and effort, we send only those papers that are subject-appropriate and that seem most likely to meet our criteria for publication for formal review. Those papers judged by the editors to be of insufficient interest to the journal's specific field, or otherwise inappropriate are rejected without external review. This initial decision also saves authors time by allowing them to pursue publication in a more suitable venue.

Reviewed manuscripts are sent to at least two independent peer reviewers. This journal follows single [LINK] anonymous peer review. Editors will consider the reviewers' advice and recommendations when making a decision on the paper. Papers may be rejected after review, or the authors could be invited to revise their work and resubmit. Once all concerns and questions raised in the review and by the editors have been resolved and the paper meets all standards for publication in the journal, a paper can be accepted for publication.

This journal also publishes special issues/collections/supplements. The peer review process for these articles is the same as the peer review process of the journal in general. Additionally, if a guest editor authors an article in their issue/collection/supplement, they will not handle the peer review process.

Please read the Springer Peer Review policy here [LINK].

Types of Article / Length of Article

The journal publishes several types of articles:

Full length Research article, Review article, Invited article, Technical note, Short communication, Comments on a published paper, Book Review, Corrigendum and Erratum should not exceed 6000 words.

Normally articles will be up to 5000 words including end notes and references. Technical note, Short communication, Comments on a published paper, Corrigendum and Erratum should not exceed 2000 words.

Manuscript Submission

Manuscript Submission

Submission of a manuscript implies that:

- the work described has not been published before;
- it is not under consideration for publication anywhere else;
- its publication has been approved by all co-authors, if any, as well as by the responsible authorities – tacitly or explicitly – at the institute, where the work has been carried out. The publisher will not be held legally responsible should there be any claims for compensation.

Permissions

Authors wishing to include figures, tables, or text passages that have already been published elsewhere are required to obtain permission from the copyright owner(s) for both the print and online format and to include evidence that such permission has been granted when submitting their papers. Any material received without such evidence will be assumed to originate from the authors.

Online Submission

Authors should submit their manuscripts online. Electronic submission substantially reduces the editorial processing and reviewing times and shortens overall publication times. Please follow the hyperlink "Submit online" on the right and upload all of your manuscript files following the instructions given on the screen.

Authorship Change Requests

Please note "no changes" in the authorship is permitted after the original submission as well as acceptance of the manuscript.

· **Title page**

Please make sure your title page contains the following information. The title page should include:

Title

The title should be concise and informative.

Author information

- The name(s) of the author(s)
- The affiliation(s) of the author(s), i.e. institution, (department), city, (state), country
- A clear indication and an active e-mail address of the corresponding author
- If available, the 16-digit ORCID of the author(s)

If address information is provided with the affiliation(s) it will also be published.

For authors that are (temporarily) unaffiliated we will only capture their city and country of residence, not their e-mail address unless specifically requested.

Abstract

Please provide an abstract of 150 to 250 words. The abstract should not contain any undefined abbreviations or unspecified references.

Please note: For some articles (particularly, systematic reviews and original research articles), 250 words may not be sufficient to provide all necessary information in the abstract. Therefore, the abstract length can be increased from the 250-word limit (to up to 450 words) if the topic dictates, and to allow full compliance with the relevant reporting guidelines.

Keywords

Please provide 4 to 6 keywords which can be used for indexing purposes.

Declarations

All manuscripts must contain the following sections under the heading 'Declarations', to be placed before 'References'.

If any of the sections are not relevant to your manuscript, please include the heading and write 'Not applicable' for that section.

Funding (information that explains whether and by whom the research was supported)

Conflicts of interest/Competing interests (include appropriate disclosures)

Availability of data and material (data transparency)

Code availability (software application or custom code)

Authors' contributions

Please see the relevant sections in the submission guidelines for further information as well as various examples of wording. Please revise/customize the sample statements according to your own needs.

Availability of data and materials

All manuscripts must include an 'Availability of data and materials' statement. Data availability statements should include information on where data supporting the results reported in the article can be found including, where applicable, hyperlinks to publicly archived datasets analysed or generated during the study. By data we mean the minimal dataset that would be necessary to interpret, replicate and build upon the findings reported in the article. We recognise it is not always possible to share research data publicly, for instance when individual privacy could be compromised, and in such instances data availability should still be stated in the manuscript along with any conditions for access.

Data availability statements can take one of the following forms (or a combination of more than one if required for multiple datasets):

- The datasets generated and/or analysed during the current study are available in the [NAME] repository, [PERSISTENT WEB LINK TO DATASETS]

- The datasets used and/or analysed during the current study are available from the corresponding author on reasonable request.
- All data generated or analysed during this study are included in this published article [and its supplementary information files].
- The datasets generated and/or analysed during the current study are not publicly available due [REASON WHY DATA ARE NOT PUBLIC] but are available from the corresponding author on reasonable request.
- Data sharing is not applicable to this article as no datasets were generated or analysed during the current study.
- The data that support the findings of this study are available from [third party name] but restrictions apply to the availability of these data, which were used under license for the current study, and so are not publicly available. Data are however available from the authors upon reasonable request and with permission of [third party name].
- Not applicable. If your manuscript does not contain any data, please state 'Not applicable' in this section.

More examples of template data availability statements, which include examples of openly available and restricted access datasets, are available [here](#).

Authors should cite any publicly available data on which the conclusions of the paper rely in the manuscript. Data citations should include a persistent identifier (such as a DOI) and should ideally be included in the reference list. Citations of datasets, when they appear in the reference list, should include the minimum information recommended by DataCite and follow journal style. Dataset identifiers including DOIs should be expressed as full URLs. For example:

Hao Z, AghaKouchak A, Nakhjiri N, Farahmand A. Global integrated drought monitoring and prediction system (GIDMaPS) data sets. figshare. 2014.
<http://dx.doi.org/10.6084/m9.figshare.853801>

With the corresponding text in the Availability of data and materials statement:

The datasets generated during and/or analysed during the current study are available in the [NAME] repository, [PERSISTENT WEB LINK TO DATASETS].^[Reference number]

Springer Nature provides a research data policy support service for authors and editors, which can be contacted at researchdata@springernature.com.

This service provides advice on research data policy compliance and on finding research data repositories. It is independent of journal, book and conference proceedings editorial offices and does not advise on specific manuscripts.

Competing interests

All financial and non-financial competing interests must be declared in this section.

See our [editorial policies](#) for a full explanation of competing interests. If you are unsure whether you or any of your co-authors have a competing interest please contact the editorial office.

Please use the authors initials to refer to each authors' competing interests in this section.

If you do not have any competing interests, please state "The authors declare that they have no competing interests" in this section.

Funding

All sources of funding for the research reported should be declared. The role of the funding body in the design of the study and collection, analysis, and interpretation of data and in writing the manuscript should be declared.

Authors' contributions

The individual contributions of authors to the manuscript should be specified in this section.

Please use initials to refer to each author's contribution in this section, for example: "FC analyzed and interpreted the patient data regarding the hematological disease and the transplant. RH performed the histological examination of the kidney, and was a major contributor in writing the manuscript. All authors read and approved the final manuscript.

Text

Text Formatting

Mathematical manuscripts should be preferably submitted in LaTeX.

○ [LaTeX macro package \(zip, 182 kB\)](#)

In case, the manuscript is prepared in Word:

- Use a normal, plain font (e.g., 10-point Times Roman) for text.
- Use italics for emphasis.
- Use the automatic page numbering function to number the pages.
- Do not use field functions.
- Use tab stops or other commands for indents, not the space bar.
- Use the table function, not spreadsheets, to make tables.
- Use the MathType or equation editor for equations.
- Save your file in docx format (Word 2007 or higher) or doc format (older Word versions).

Headings

Please use no more than three levels of displayed headings.

Abbreviations

Abbreviations should be defined at first mention and used consistently thereafter.

Footnotes

Footnotes can be used to give additional information, which may include the citation of a reference included in the reference list. They should not consist solely of a reference citation, and they should never include the bibliographic details of a reference. They should also not contain any figures or tables.

Footnotes to the text are numbered consecutively; those to tables should be indicated by superscript lower-case letters (or asterisks for significance values and other statistical data).

Footnotes to the title or the authors of the article are not given reference symbols.

Always use footnotes instead of endnotes.

Acknowledgments

Acknowledgments of people, grants, funds, etc. should be placed in a separate section before the reference list. The names of funding organizations should be written in full.

□

References

Citation

Cite references in the text by name and year in parentheses. Some examples are:

- Negotiation research spans many disciplines (Thompson 1990).
- This result was later contradicted by Becker and Seligman (1996).
- This effect has been widely studied (Abbott 1991; Barakat et al. 1995; Kelso and Smith 1998; Medvec et al. 1999).

Reference list

The list of references should only include works that are cited in the text and that have been published or accepted for publication. Personal communications and unpublished works should only be mentioned in the text. Do not use footnotes or endnotes as a substitute for a reference list. Reference list entries should be alphabetized by the last names of the first author of each work.

References should be cited in the text by the Arabic numerals in square brackets. List of references should be arranged in the alphabetical order of the author's last name. Each reference should include the author's name, title, the abbreviated name of the journal, volume number, (year), page

numbers, as in the sample citation given below:

For Periodicals:

T. L. Gomez, Algebraic Stacks, *Proc. Indian Acad. Sci. Math. Sci.*, **111** (2001), 1-31

For Books:

B. L. S. Prakasa Rao, *Statistical Inference for Diffusion Type Processes*, Arnold, London and Oxford University Press, New York (1999).

Conference Proceedings:

M. S. Raghunathan, *The congruence subgroup problem*, Proceedings of the Hyderabad Conference on Algebraic Groups, Hyderabad, Dec. 1989, Manoj Prakashan, India.

Abbreviations for the titles of the periodicals should, in general, conform to the *World List of Scientific Periodicals*.

TABLES

- All tables are to be numbered using Arabic numerals.
- Tables should always be cited in text in consecutive numerical order.
- For each table, please supply a table caption (title) explaining the components of the table.
- Identify any previously published material by giving the original source in the form of a reference at the end of the table caption.
- Footnotes to tables should be indicated by superscript lower-case letters (or asterisks

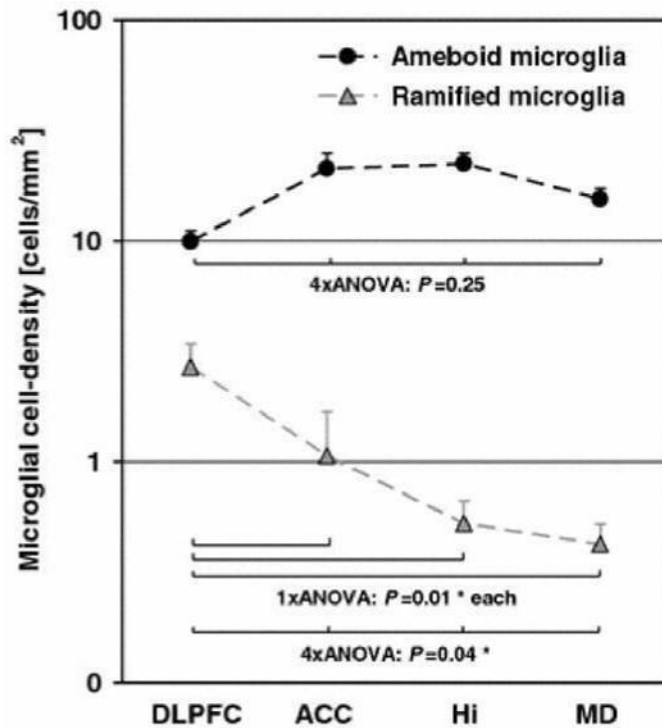
ARTWORK AND ILLUSTRATIONS GUIDELINES

for significance values and other statistical data) and included beneath the table body.

For the best quality final product, it is highly recommended that you submit all of your artwork – photographs, line drawings, etc. – in an electronic format. Your art will then be produced to the highest standards with the greatest accuracy to detail. The published work will directly reflect the quality of the artwork provided.

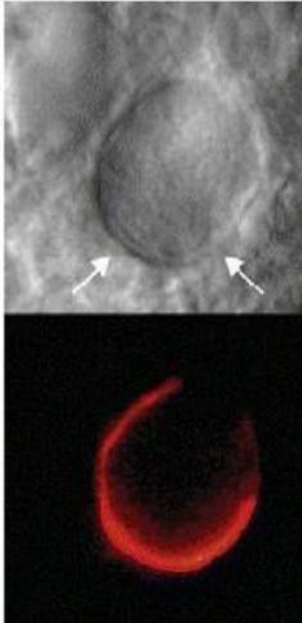
Electronic Figure Submission

- Supply all figures electronically.
- Indicate what graphics program was used to create the artwork.
- For vector graphics, the preferred format is EPS; for halftones, please use TIFF format. MS-Office files are also acceptable.
- Vector graphics containing fonts must have the fonts embedded in the files.
- Name your figure files with "Fig" and the figure number, e.g., Fig1.eps. **Line Art**



- Definition: Black and white graphic with no shading.
- Do not use faint lines and/or lettering and check that all lines and lettering within the figures are legible at final size.
- All lines should be at least 0.1 mm (0.3 pt) wide.
- Scanned line drawings and line drawings in bitmap format should have a minimum resolution of 1200 dpi.
- Vector graphics containing fonts must have the fonts embedded in the files.

Halftone Art

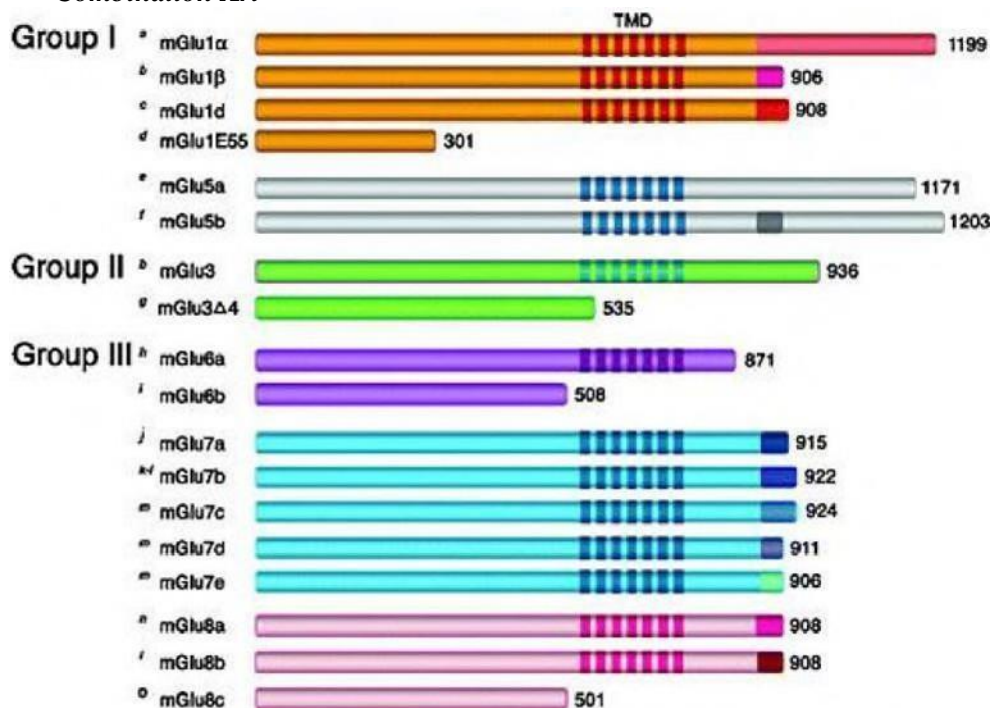


○ Definition: Photographs, drawings, or paintings with fine shading, etc.

○ If any magnification is used in the photographs, indicate this by using scale bars within the figures themselves.

○ Halftones should have a minimum resolution of 300 dpi.

Combination Art



○ Definition: a combination of halftone and line art, e.g., halftones containing line drawing, extensive lettering, color diagrams, etc.

○ Combination artwork should have a minimum resolution of 600 dpi.

Color Art

○ Color art is free of charge for online publication.

○ If black and white will be shown in the print version, make sure that the main information will still be visible. Many colors are not distinguishable from one another when converted to black and white. A simple way to check this is to make a xerographic copy to see if the necessary distinctions between the different colors are still apparent.

- If the figures will be printed in black and white, do not refer to color in the captions.
- Color illustrations should be submitted as RGB (8 bits per channel).

Figure Lettering

- To add lettering, it is best to use Helvetica or Arial (sans serif fonts).
- Keep lettering consistently sized throughout your final-sized artwork, usually about 2–3 mm (8–12 pt).
- Variance of type size within an illustration should be minimal, e.g., do not use 8-pt type on an axis and 20-pt type for the axis label.
- Avoid effects such as shading, outline letters, etc.
- Do not include titles or captions within your illustrations.

Figure Numbering

- All figures are to be numbered using Arabic numerals.
- Figures should always be cited in text in consecutive numerical order.
- Figure parts should be denoted by lowercase letters (a, b, c, etc.).
- If an appendix appears in your article and it contains one or more figures, continue the consecutive numbering of the main text. Do not number the appendix figures, "A1, A2, A3, etc." Figures in online appendices (Electronic Supplementary Material) should, however, be numbered separately.

Figure Captions

- Each figure should have a concise caption describing accurately what the figure depicts. Include the captions in the text file of the manuscript, not in the figure file.
- Figure captions begin with the term Fig. in bold type, followed by the figure number, also in bold type.
- No punctuation is to be included after the number, nor is any punctuation to be placed at the end of the caption.
- Identify all elements found in the figure in the figure caption; and use boxes, circles, etc., as coordinate points in graphs.
- Identify previously published material by giving the original source in the form of a reference citation at the end of the figure caption.

Figure Placement and Size

- When preparing your figures, size figures to fit in the column width.
- For most journals the figures should be 39 mm, 84 mm, 129 mm, or 174 mm wide and not higher than 234 mm.
- For books and book-sized journals, the figures should be 80 mm or 122 mm wide and not higher than 198 mm.

Permissions

If you include figures that have already been published elsewhere, you must obtain permission from the copyright owner(s) for both the print and online format. Please be aware that some publishers do not grant electronic rights for free and that Springer will not be able to refund any costs that may have occurred to receive these permissions. In such cases, material from other sources should be used.

Accessibility

- In order to give people of all abilities and disabilities access to the content of your figures, please make sure that
- All figures have descriptive captions (blind users could then use a text-to-speech software or a text-to-Braille hardware)
- Patterns are used instead of or in addition to colors for conveying information (colorblind users would then be able to distinguish the visual elements)
- Any figure lettering has a contrast ratio of at least 4.5:1

ELECTRONIC SUPPLEMENTARY MATERIAL

Springer accepts electronic multimedia files (animations, movies, audio, etc.) and other supplementary files to be published online along with an article or a book chapter. This feature can add dimension to the author's article, as certain information cannot be printed or is more convenient in electronic form.

Submission

- Supply all supplementary material in standard file formats.
- Please include in each file the following information: article title, journal name, author names; affiliation and e-mail address of the corresponding author.
- To accommodate user downloads, please keep in mind that larger-sized files may require very long download times and that some users may experience other problems during downloading.

Audio, Video, and Animations

- Always use MPEG-1 (.mpg) format.

Text and Presentations

- Submit your material in PDF format; .doc or .ppt files are not suitable for long-term viability.
- A collection of figures may also be combined in a PDF file.

Spreadsheets

- Spreadsheets should be converted to PDF if no interaction with the data is intended.
- If the readers should be encouraged to make their own calculations, spreadsheets should be submitted as .xls files (MS Excel).

Specialized Formats

- Specialized format such as .pdb (chemical), .vrl (VRML), .nb (Mathematica notebook), and .tex can also be supplied.

Collecting Multiple Files

- It is possible to collect multiple files in a .zip or .gz file.

Numbering

- If supplying any supplementary material, the text must make specific mention of the material as a citation, similar to that of figures and tables.
- Refer to the supplementary files as "Online Resource", e.g., "... as shown in the animation (Online Resource 3)", "... additional data are given in Online Resource 4".
- Name the files consecutively, e.g. "ESM_3.mpg", "ESM_4.pdf".

Captions

- For each supplementary material, please supply a concise caption describing the content of the file.

Processing of supplementary files

- Electronic supplementary material will be published as received from the author without any conversion, editing, or reformatting.

Accessibility

In order to give people of all abilities and disabilities access to the content of your supplementary files, please make sure that

- The manuscript contains a descriptive caption for each supplementary material
- Video files do not contain anything that flashes more than three times per second (so that users prone to seizures caused by such effects are not put at risk)

Does Springer provide English language support?

Manuscripts that are accepted for publication will be checked by our copyeditors for spelling and formal style. This may not be sufficient if English is not your native language and substantial editing would be required. In that case, you may want to have your manuscript edited by a native speaker

prior to submission. A clear and concise language will help editors and reviewers concentrate on the scientific content of your paper and thus smooth the peer review process.

The following editing service provides language editing for scientific articles in all areas Springer publishes in:

○ [Edanz English editing for scientists](#)

Use of an editing service is neither a requirement nor a guarantee of acceptance for publication. Please contact the editing service directly to make arrangements for editing and payment.

○ [Edanz English editing for scientists](#)

For Authors from China

文章在投稿前进行专业的语言润色将对作者的投稿进程有所帮助。作者可自愿选择使用 Springer 推荐的编辑服务,使用与否并不作为判断文章是否被录用的依据。提高文章的语言质量将有助于

审稿人理解文章的内容,通过对学术内容的判断来决定文章的取舍,而不会因为语言问题导致直接退稿。作者需自行联系 Springer 推荐的编辑服务公司,协商编辑事宜。

○ [理文编辑](#)

For Authors from Japan

ジャーナルに論文を投稿する前に、ネイティブ・スピーカーによる英文校閲を希望されている方には、Edanz 社をご紹介します。サービス内容、料金および申込方法など、日本語による詳しい説明はエダンズグループジャパン株式会社の下記サイトをご覧ください。

○ [エダンズグループジャパン](#)

For Authors from Korea

E d a n z .

AI HI -I- LH , 71-al 5I-

). gi of LI c: . GII GI fl WII 114 g g kI Pj

Edanz Editing Global

AI-015.;!-6H-TAI LIIi-A[81-1.H LI .

○ [Edanz Editing Global](#)

After acceptance

Upon acceptance of your article you will receive a link to the special Author Query Application at Springer's web page where you can sign the Copyright Transfer Statement online and indicate whether you wish to order OpenChoice, offprints, or printing of figures in color.

Once the Author Query Application has been completed, your article will be processed and you will receive the proofs.

Open Choice

In addition to the normal publication process (whereby an article is submitted to the journal and access to that article is granted to customers who have purchased a subscription), Springer provides an alternative publishing option: Springer Open Choice. A Springer Open Choice article receives all the benefits of a regular subscription-based article, but in addition is made available publicly through Springer's online platform SpringerLink.

○ [Springer Open Choice](#)

Copyright transfer

Authors will be asked to transfer copyright of the article to the Publisher (or grant the Publisher exclusive publication and dissemination rights). This will ensure the widest possible protection and dissemination of information under copyright laws.

Open Choice articles do not require transfer of copyright as the copyright remains with the author. In opting for open access, the author(s) agree to publish the article under the Creative Commons Attribution License.

Offprints

Offprints can be ordered by the corresponding author.

Color illustrations

Online publication of color illustrations is free of charge. For color in the print version, authors will be expected to make a contribution towards the extra costs.

Proof reading

The purpose of the proof is to check for typesetting or conversion errors and the completeness and accuracy of the text, tables and figures. Substantial changes in content, e.g., new results, corrected values, title and authorship, are not allowed without the approval of the Editor.

After online publication, further changes can only be made in the form of an Erratum, which will be hyperlinked to the article.

Online First

The article will be published online after receipt of the corrected proofs. This is the official first publication citable with the DOI. After release of the printed version, the paper can also be cited by issue and page numbers.



<http://www.springer.com/journal/40819>

International Journal of Applied and Computational
Mathematics

Editor-in-Chief: Saha Ray, S.

ISSN: 2349-5103 (print version)

ISSN: 2199-5796 (electronic version)

Journal no. 40819



<http://www.springer.com/journal/40819>

International Journal of Applied and Computational
Mathematics

Editor-in-Chief: Saha Ray, S.

ISSN: 2349-5103 (print version)

ISSN: 2199-5796 (electronic version)

Journal no. 40819